

HOFFMANN INNOVATIONS, INC.

AMP/EFI MS3PRO DIYAUTOTUNE

AMP EFI AXM-100 Tach Adapter Module

The AXM-100 module accepts a 0-12 volt or 0-5 volt tach signal, and converts it into a high voltage spike to trigger older tachometers that do not read a low voltage signal. This module is not intended for use with current triggered tachometers, which connect to the positive terminal of the coil.

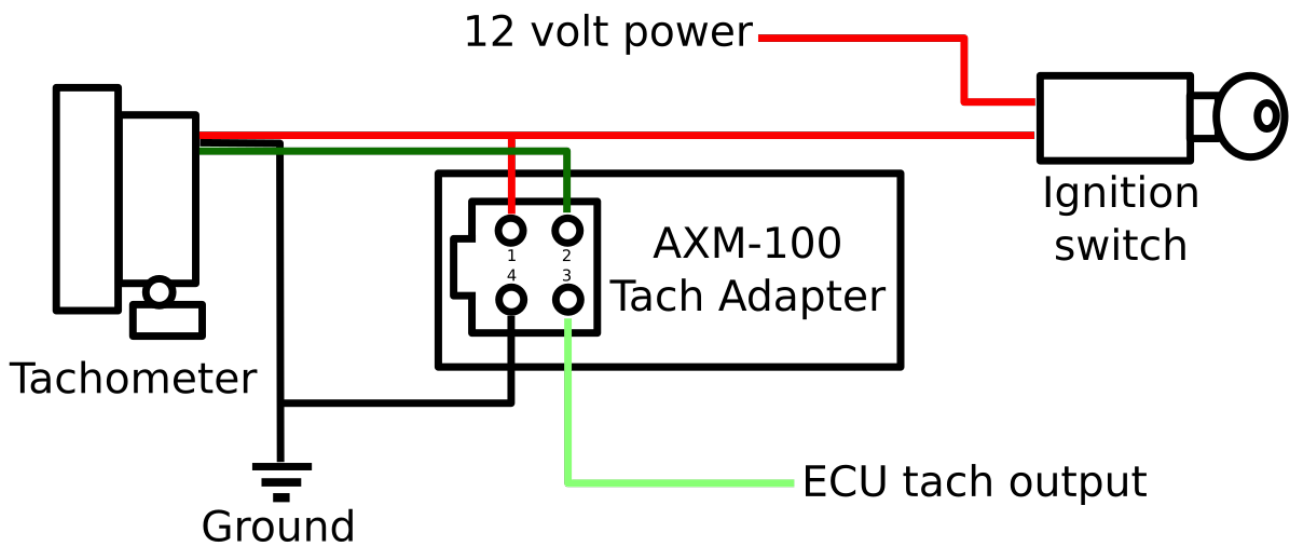
Connector

The AXM-100 module uses an Amphenol AT connector, compatible with Deutsch DT and similar motorsports connectors. We include standard “closed barrel” terminals, which you can crimp with the same sort of tools you would use for Deutsch connectors or mil-spec terminals. Waytek Wire stock number 619 is a good budget option if you do not already have a suitable tool. Pin numbers are molded into the connector. Here is what each pin does, by number:

1. Switched 12 volt power
2. High voltage signal to tachometer
3. Tach signal from ECU or ignition module
4. Ground

Wiring diagram

The wire colors show in the diagram are common on aftermarket tachometers, but OEM tachometers are often different, and some aftermarket units may use a different color code. Please verify the pinout of your tachometer before installing. Improper wiring may damage the AXM-100 or instrument cluster.



AMP EFI
2405 Murphy Blvd.
Gainesville, GA 30504
support@ampefi.com